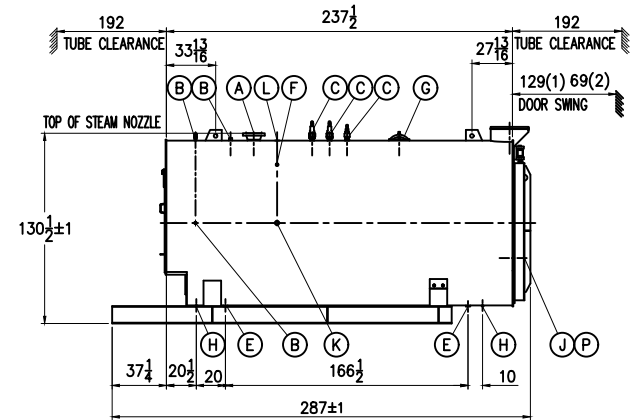
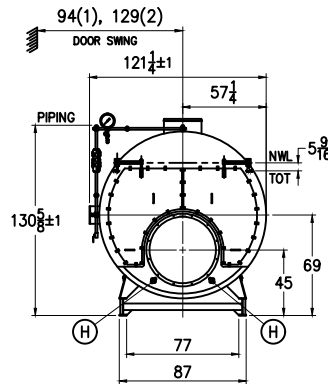
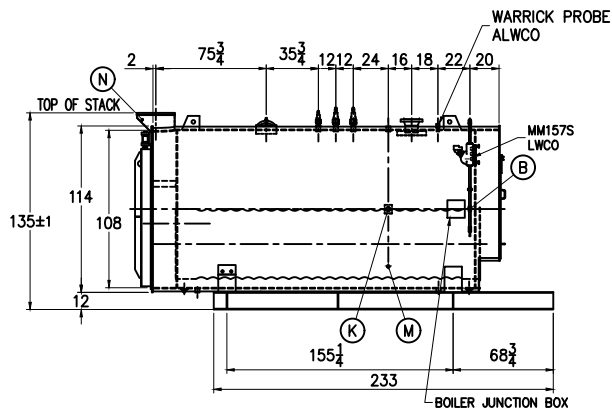


WATER LEVEL SEQUENCE



BOILER CONNECTIONS		RATINGS & CAPACITIES		LTR	DATE	REVISION	BY	REPRESENTATIVE:
A.(1) STEAM OUTLET	8" 300# FLANGE	HORSEPOWER	700 HP*					?
B.(4) LWCO	1" NPT	DESIGN PRESSURE	150 PSIG STEAM					
C.(3) SAFETY VALVE	2" NPT	GROSS OUTPUT	23433 MBH*					
D.() SAFETY VALVE		STEAM (FROM & AT 212°F)	24150 LB/Hr*					
E.(2) BOILER BLOWDOWN	2" NPT	HEAT RELEASE: (FURNACE ONLY)	149,982 BTU/CuFt*					PROJECT:
F.(1) SURFACE BLOWDOWN	1" NPT	RATED INPUT	29291 MBH*					?
G.(1) MANWAY	12" x 16"	HEATING SURFACE (ASME)	3550 SqFt					
H.(4) HANDHOLE	3" x 4"	FURNACE HEATING SURFACE	224.52 SqFt					
J.(1) CLEANOUT	17" ID	FURNACE VOLUME:						
K.(2) FEEDWATER	2" NPT	FURNACE ONLY	195.29 CuFt					
L.(1) AUXILIARY/VENT	2" NPT	STEAMING VOLUME	120.26 CuFt					
M.(1) LOW FIRE HOLD	1" NPT	STEAM RELEASE AREA	114.51 SqFt					
N.(1) STACK TEMP	1/2" NPT	WATER CAPACITY:						
P.(1) SIGHTPORT	1" PIPE	(FULL)	5,185 GAL @ 43,125 LBS					
Q.()		(NWL)	4,285 GAL @ 35,642 LBS					
R.()		SHIPPING WEIGHT:	47,800 LBS					
S.()								

NOTES			
1. ALL CONTROLS MOUNTED AS PER SPECIFICATION SHEET. 2. SPECIFICATION SHEET TAKES PRIORITY OVER R & D SHEET. 3. REAR DOOR SWING: (1) MIN SIDE, MAX REAR (2) MAX SIDE, MIN REAR 4. BOILER DESIGN CODE ASME SECTION I. 5. BOILER INSULATED WITH 2" OF INSULATION AND JACKETED WITH 22 GAUGE STEEL. 6. ALL DIMENSIONS ±1/2 UNLESS OTHERWISE NOTED. *7. HORSEPOWER AND RELATED INFO BASED ON 5 SqFt FIRING			

	CHECKED BY	?	DATE	THIS DRAWING IS THE PROPERTY OF SUPERIOR BOILER WORKS & SHALL NOT BE REPRODUCED IN PART OR IN WHOLE, & NONE OF ITS INFORMATION SHALL BE REVEALED WITHOUT PERMISSION OR TO THE DETRIMENT OF THE OWNER. IT MUST BE RETURNED UPON REQUEST.
	DRAWN BY	?	DATE	
BOILER MODEL		MOHAWK 4-5-3502-S150-		
SCALE	DRAWING No		?	
1/80				