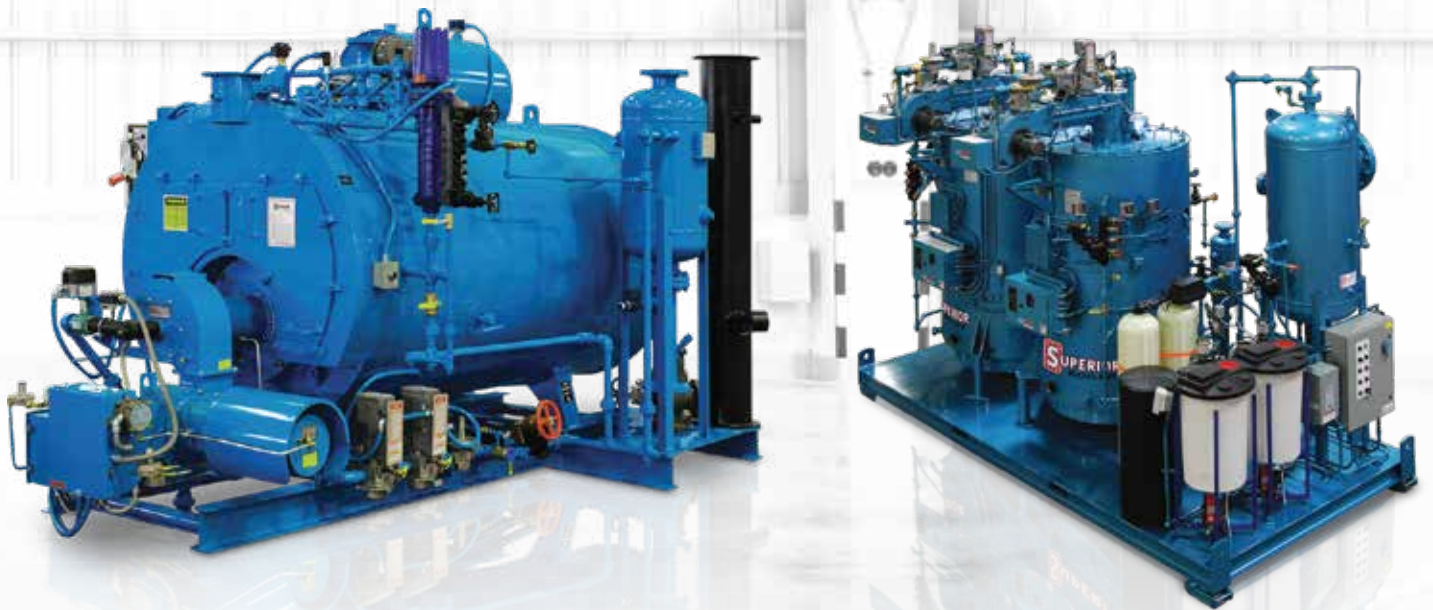


# **SUPERIOR BOILER**



**SKID PACKAGES**  
***CUSTOM DESIGNED FOR EACH APPLICATION***



- ✓ Configurations available with vertical, 2-pass, or 3-pass boilers
  - Vertical steam or hot water
  - 2-pass dryback or wetback
  - 3-pass dryback or wetback
- ✓ Custom designed for each application
- ✓ Design pressures\* up to 300 psig steam & 160 psig hot water
- ✓ Very small footprint for tight-fit applications
- ✓ Extremely rugged designs
- ✓ Can be customized to burn your choice of fuels, such as syngas, digester gas, bio-diesel, natural gas, #2 oil, propane, hydrogen & heavy-oil
- ✓ Packages available with:
  - Single-point electric panel
  - Feedwater system
  - Blowdown separators
  - Feedwater softener
  - Chemical feed system
  - Boiler economizer
  - and more!



\*Higher design pressures available on request. Contact Superior Boiler for more information



When it comes to boilers, flexibility and resourcefulness are king. Superior Boiler and our team of Superior Problem Solvers tackle your most complex boiler challenges so you can get down to business and keep the world running. We design and manufacture a complete line of boilers for all market segments. We build to our customers' exact standards at our facility in Hutchinson, KS, and our boilers are installed all over the world.



3524 E 4th Ave. / Hutchinson, KS 67501 / (620) 662-6693

[SUPERIORBOILER.COM](http://SUPERIORBOILER.COM)